

DIAGRAM STUDIES

A. On lines 1-4, write the names of the parts of a motor neuron that have the same numbers in the diagram. Then answer question 5.

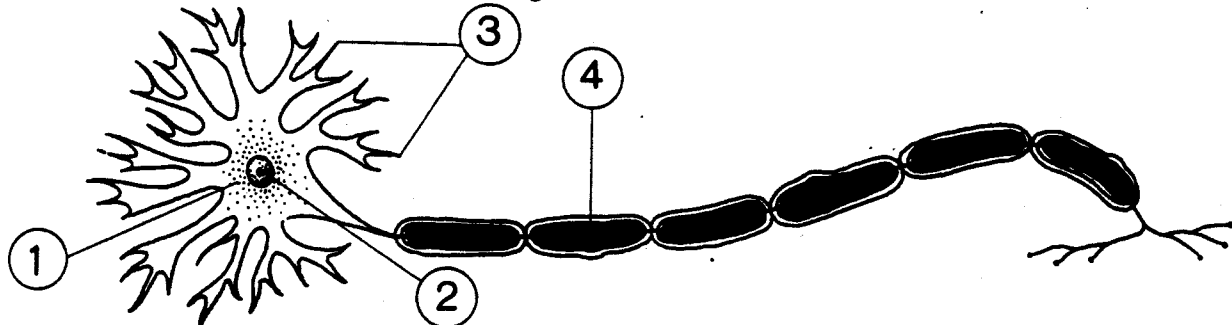
1. _____

3. _____

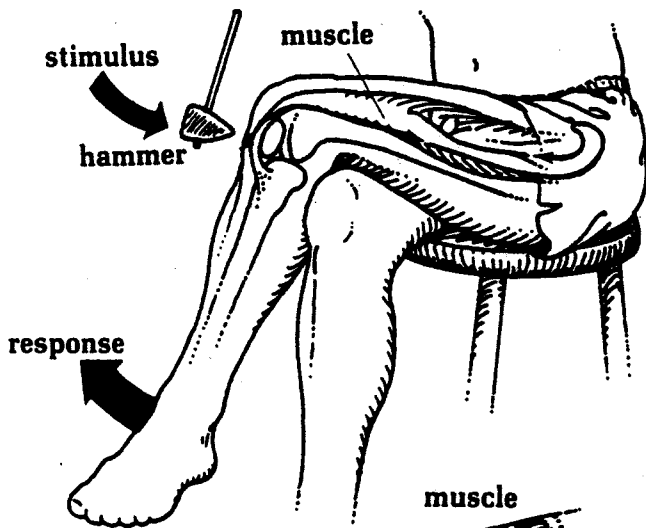
2. _____

4. _____

5. In which direction does the impulse travel along the axon? _____
 Show this with an arrow on the diagram.



B. Study the diagram of the knee-jerk reflex. Decide whether each statement is true or false. Write T or F on the line before each statement. If the statement is false, correct the underlined word or phrase.



- ___ 1. The hammer provides the stimulus.
- ___ 2. The spinal nerve contains fibers from both the sensory and motor neurons.
- ___ 3. The interneurons are located outside the spinal cord.
- ___ 4. The impulse travels from the sensory neuron to the interneuron.
- ___ 5. Fibers from the interneuron connect with the thigh muscle.
- ___ 6. The contraction of the thigh muscle is the response.

