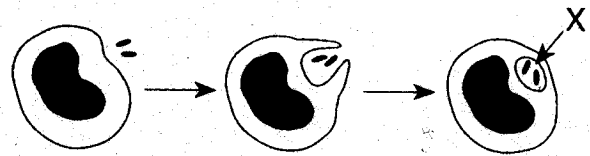


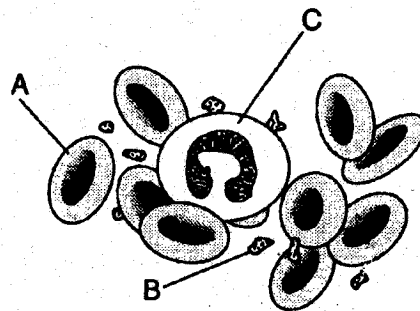
- Which phrase does not describe a way the human body responds to fight disease?
 - destruction of infectious agents by white blood cells
 - production of antibodies by white blood cells
 - increased production of white blood cells
 - production of pathogens by white blood cells
- To receive necessary nutrients and eliminate wastes, all human body cells must be
 - surrounded by cilia
 - endocrine in nature
 - able to carry on phagocytosis
 - surrounded by a transport medium
- Which statement best describes an immune response?
 - It always produces antibiotics.
 - It usually involves the recognition and destruction of pathogens.
 - It stimulates asexual reproduction and resistance in pathogens.
 - It releases red blood cells that destroy parasites.
- One similarity between cell receptors and antibodies is that both
 - are produced by nerve cells
 - are highly specific in their actions
 - slow the rates of chemical reactions
 - are involved in digestion
- A substance which causes an immunological reaction when introduced into the body of man is
 - glucose
 - insulin
 - an antibody
 - an antigen
- Which disease damages the human immune system, leaving the body open to certain infectious agents?
 - flu
 - AIDS
 - chicken pox
 - pneumonia
- In some individuals, the immune system attacks substances such as grass pollen that are usually harmless, resulting in
 - an allergic reaction
 - a form of cancer
 - an insulin imbalance
 - a mutation
- Most of the intercellular fluid that surrounds body cells is derived from
 - red blood cells
 - nuclear fluids
 - blood plasma
 - white blood cells

- The diagram below represents a white blood cell engulfing some bacteria.



- The structure labeled X is most likely a
- nucleus
 - centriole
 - ribosome
 - vacuole

- Which statement correctly describes the activities of the components of human blood shown in the diagram below?



- Both A and B function in immune responses, and C transports oxygen.
- A, B, and C are able to synthesize hemoglobin.
- Both B and C provide immunity, and A transports nutrients.
- A transports oxygen, B initiates clots, and C functions in immune responses.

Answers: 1=4, 2=4, 3=3, 4=2, 5=4, 6=2, 7=1, 8=3, 9=8, 10=2, 11=4, 12=1, 13=2, 14=3, 15=4, 16=2, 17=1, 18=3, 19=2, 20=4, 21=2, 22=4, 23=2, 24=3, 25=4, 26=2, 27=1, 28=3, 29=2, 30=4, 31=2, 32=4, 33=2, 34=3, 35=4, 36=2, 37=1, 38=3, 39=2, 40=4, 41=2, 42=3, 43=4, 44=2, 45=3, 46=4, 47=2, 48=3, 49=4, 50=2, 51=3, 52=4, 53=2, 54=3, 55=4, 56=2, 57=3, 58=4, 59=2, 60=3, 61=4, 62=2, 63=3, 64=4, 65=2, 66=3, 67=4, 68=2, 69=3, 70=4, 71=2, 72=3, 73=4, 74=2, 75=3, 76=4, 77=2, 78=3, 79=4, 80=2, 81=3, 82=4, 83=2, 84=3, 85=4, 86=2, 87=3, 88=4, 89=2, 90=3, 91=4, 92=2, 93=3, 94=4, 95=2, 96=3, 97=4, 98=2, 99=3, 100=4